

# RHTemp1000

## Humidity and Temperature Data Logger

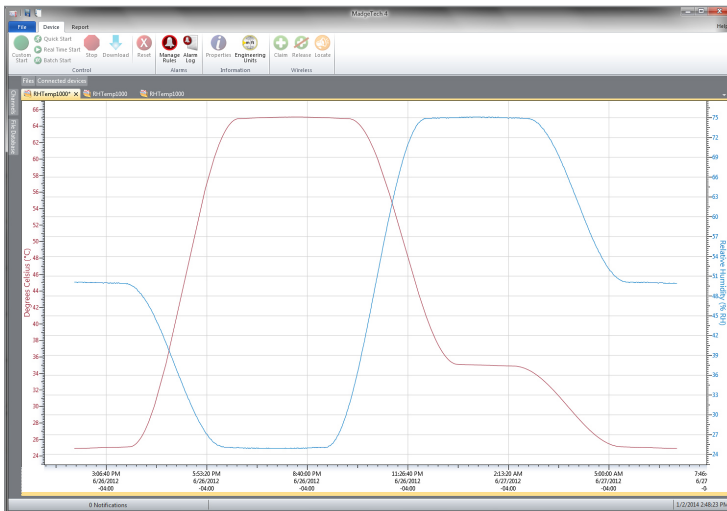


The RHTemp1000 humidity and temperature logger is a rugged, battery powered, stand alone device which can be used to automatically record humidity and temperature. This all in one compact, portable, easy to use device is able to measure and record up to 32,640 humidity and temperature measurements.

The RHTemp1000 data is all time and date stamped. The storage medium is non-volatile solid state memory, providing maximum data security even if the battery becomes discharged. With the added battery life indicator feature, users can now easily identify low voltage and change batteries before usage. The device can be started and stopped directly from your computer and its small, sleek size allows it to fit almost anywhere. The RHTemp1000 makes data retrieval quick and easy. Simply insert the device into the IFC400 or the IFC406 USB docking station (sold separately) and our user-friendly software does the rest.

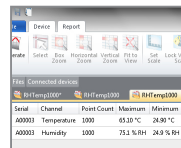
The MadgeTech Software is a powerful, analytic tool, available to download for free from our website [madgetech.com](http://madgetech.com). Data can be viewed in graphical or tabular formats and summary and statistics views are available for further analysis.

## MadgeTech 4 Software Features



Graph View

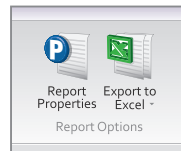
- Multiple graph overlay
- Statistics
- Digital calibration
- Zoom in/ zoom out
- Lethality equations (F0, PU)
- Mean Kinetic Temperature
- Full time zone support
- Data annotation
- Min./Max./Average lines
- Summary view




The screenshot shows the 'Statistics' window in the software. It displays a table with columns for 'Serial', 'Channel', 'Point Count', 'Maximum', 'Minimum', and 'A'. The data is as follows:

Serial	Channel	Point Count	Maximum	Minimum	A
400003	Temperature	1000	65.10 °C	24.90 °C	4
400003	Humidity	1000	75.1 %RH	24.9 %RH	5

### Statistics



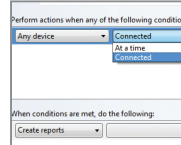
### Export to Excel



The screenshot shows the 'Tabular Data View' window. It displays a table with columns for 'Time', 'Time Zone', and 'Data'. The data is as follows:

Time	Time Zone	Data
1:13:37 PM	-04:00	-05:00:00
1:14:37 PM	-04:00	-05:01:00
1:15:37 PM	-04:00	-05:02:00
1:16:37 PM	-04:00	-05:03:00
1:17:37 PM	-04:00	-05:04:00
1:18:37 PM	-04:00	-05:05:00
1:19:37 PM	-04:00	-05:06:00
1:20:37 PM	-04:00	-05:07:00
1:21:37 PM	-04:00	-05:08:00
1:22:37 PM	-04:00	-05:09:00
1:23:37 PM	-04:00	-05:10:00
1:24:37 PM	-04:00	-05:11:00
1:25:37 PM	-04:00	-05:12:00
1:26:37 PM	-04:00	-05:13:00
1:27:37 PM	-04:00	-05:14:00
1:28:37 PM	-04:00	-05:15:00

Tabular Data View



Automation

## Features

- Software Battery Life Indicator
- 316 Stainless Steel Enclosure
- Small, Sleek Design
- Fast Response Time
- Engraved Label
- CE Compliant
- Optical Key Ring End Cap

## Benefits

- Faster Downloads (1 min. full memory)
- Docking Station Communication
- Easily Identify Low Battery Voltage

## Applications

- Implement HACCP Programs
- Environmental Studies
- Medical and Pharmaceutical

## SPECIFICATIONS

Specifications are subject to change without notice.

TEMPERATURE	
Temperature Sensor	Resistance Temperature Detector (RTD)
Temperature Range	-40 °C to +80 °C (-40 °F to +176 °F)
Temperature Resolution	0.01 °C (0.018 °F)
Calibrated Accuracy	±0.5 °C (±0.9 °F) from 0 °C to 55 °C (32 °F to 131 °F)
Temperature Response Time in Air	t <sub>63</sub> - 8 minutes to 63% of change t <sub>90</sub> - 68 minutes to 90% of change

HUMIDITY	
Humidity Sensor	Capacitive Polymer
Humidity Range	0 %RH to 100 %RH (non-condensing)
Humidity Resolution	0.1 %RH
Calibrated Accuracy	±3.0 %RH
Specified Accuracy Range	25 %RH to 75 %RH +20 °C to +40 °C (68 °F to 104 °F) Hysteresis Error 1 % typical, 3 % Maximum
Humidity Response Time in Air	t <sub>90</sub> - 2 minutes to 90% of change

GENERAL	
Start Modes	Software programmable immediate start or delay start up to 24 months in advance
Real Time Recording	May be used with PC to monitor and record data in real time
Password Protection	Yes
Memory	32,640 readings per channel
Wrap Around	Yes
Reading Rate	1 reading every second up to 1 reading every 24 hours
Calibration	Digital calibration through software
Calibration Date	Automatically recorded within device
Battery Type	Tadiran TL-2150/S 3.6V lithium battery included; user replaceable
Battery Life	5 years typical at 25 °C (15 minute reading rate)
Time Accuracy	±10 seconds/month at 25 °C (0 °C to 50 °C)
Computer Interface	IFC400 or IFC406
Operating System Compatibility	Windows XP SP3 or later
Software Compatibility	Standard Software version 4.1.0.2 or later Secure Software version 4.1.3.0 or later
Operating Environment	-40 °C to +80 °C (-40 °F to +176 °F) 0 %RH to 100 %RH non-condensing
Dimensions	Without Keyring: 1.67 in x 0.97 in dia. (42.3 mm x 24.6 mm dia.) With Keyring: 1.98 in x 0.97 in dia. (50.3 mm x 24.6 mm dia.)
Weight	Without Keyring: 2.40 oz (68 g) With Keyring: 2.22 oz (63 g)
Material	316 Stainless Steel/Radel
Approvals	CE

**BATTERY WARNING:** FIRE, EXPLOSION AND SEVERE BURN HAZARD. DO NOT RECHARGE, DISASSEMBLE, HEAT ABOVE 100 °C (212 °F), INCINERATE, CRUSH, OR EXPOSE CONTENTS TO WATER.

## Ordering Information

RHTemp1000	PN 901469-00	Humidity and Temperature Data Logger
RHTemp1000-KR	PN 901490-00	Humidity and Temperature Data Logger with keyring end cap
IFC400	PN 900319-00	Docking station with USB cable
IFC406	PN 900325-00	6 Port, Multiplexer docking station with USB cable
TL-2150/S	PN 901745-00	Replacement battery for the RHTemp1000 and RHTemp1000-KR