

# RHTemp1000IS

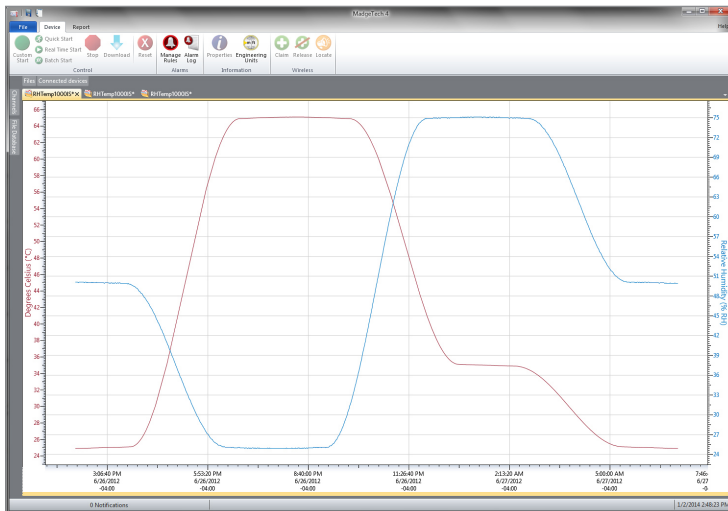
## Intrinsically Safe Humidity and Temperature Data Logger

The RHTemp1000IS is an Intrinsically Safe humidity and temperature data logger. It carries hazardous location, intrinsically safe certification in accordance with the latest issue of FM3600, FM3610. This certification makes the device ideal for EtO Sterilization, environmental studies, and numerous other hostile environment applications.

The device can be started and stopped directly from your computer and its small, sleek size allows it to fit almost anywhere. The RHTemp1000IS makes data retrieval quick and easy. Simply insert the device into the IFC400 or the IFC406 USB docking station (sold separately) and our user-friendly software does the rest. The small size of the RHTemp1000IS, allows it to be placed in remote or hard to reach locations. The device now features a battery life indicator allowing users to easily identify low voltage and change batteries when required. This feature maximizes the use of your battery life and is a cost saving efficiency.

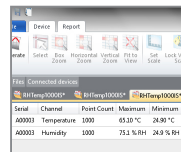
The MadgeTech Software is a powerful, analytic tool, available to download for free from our website [madgetech.com](http://madgetech.com). Data can be viewed in graphical or tabular formats and summary and statistics views are available for further analysis.

## MadgeTech 4 Software Features

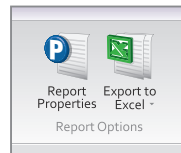


Graph View

- Multiple graph overlay
- Statistics
- Digital calibration
- Zoom in/ zoom out
- Lethality equations (F0, PU)
- Mean Kinetic Temperature
- Full time zone support
- Data annotation
- Min./Max./Average lines
- Summary view



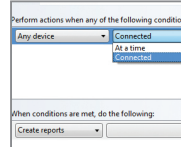
Statistics



Export to Excel

| Time       | Time Zone | Data      |
|------------|-----------|-----------|
| 1:13:37 PM | -04:00    | -05:00:00 |
| 1:14:37 PM | -04:00    | -05:00:10 |
| 1:15:37 PM | -04:00    | -05:00:20 |
| 1:16:37 PM | -04:00    | -05:00:30 |
| 1:17:37 PM | -04:00    | -05:00:40 |
| 1:18:37 PM | -04:00    | -05:00:50 |
| 1:19:37 PM | -04:00    | -05:01:00 |
| 1:20:37 PM | -04:00    | -05:01:10 |
| 1:21:37 PM | -04:00    | -05:01:20 |
| 1:22:37 PM | -04:00    | -05:01:30 |
| 1:23:37 PM | -04:00    | -05:01:40 |
| 1:24:37 PM | -04:00    | -05:01:50 |

Tabular Data View



Automation



## Features

- Software Battery Life Indicator
- 316 Stainless Steel Enclosure
- Small, Sleek Design
- Fast Response Time
- Engraved Label
- CE Compliant
- Optional Key Ring End Cap

## Certified Intrinsically Safe

- Class I, II, III, Division 1, Groups A-G,  $-40\text{ °C} < T_{\text{amb}} < +80\text{ °C}$ , T4A
- Class I, II, III, Division 2, Groups A-D, F, G,  $-40\text{ °C} < T_{\text{amb}} < +80\text{ °C}$ , T4A
- Temperature Class: T4A
- CAN/CSA-C22.2 No. 60079-0:15
- CAN/CSA-C22.2 No. 60079-11:14

## Benefits

- Faster Downloads (1 min. full memory)
- ISO 17025 Accredited Calibration Certificate Included
- Easily Identify Low Battery Voltage

## Applications

- EtO Sterilization
- Environmental Studies
- Hostile Environment Monitoring
- Medical and Pharmaceutical

## SPECIFICATIONS

Specifications are subject to change without notice.

| TEMPERATURE            |   |
|------------------------|---|
| Temperature Sensor     | Resistance Temperature Detector (RTD)               |
| Temperature Range      | -40 °C to +80 °C (-40 °F to +176 °F)                |
| Temperature Resolution | 0.01 °C (0.02 °F)                                   |
| Calibrated Accuracy    | ±0.5 °C (0 °C to +50 °C), ±0.9 °F (32 °F to 122 °F) |

| HUMIDITY                 |   |
|--------------------------|---|
| Humidity Sensor          | Capacitive Polymer  |
| Humidity Range           | 0 %RH to 100 %RH (non-condensing)   |
| Humidity Resolution      | 0.1 %RH   |
| Calibrated Accuracy      | ±3.0 %RH maximum  |
| Specified Accuracy Range | 25 %RH to 75 %RH<br>+20 °C to +40 °C (68 °F to 104 °F)<br>Hysteresis Error 1 % typical, 3 % Maximum |

| GENERAL                        |   |
|--------------------------------|---|
| Start Modes                    | Software programmable immediate start or delay start up to 24 months in advance   |
| Real Time Recording            | May be used with PC to monitor and record data in real time   |
| Password Protection            | Yes   |
| Memory                         | 32,640 readings per channel   |
| Wrap Around                    | Yes   |
| Reading Rate                   | 1 reading every second up to 1 reading every 24 hours   |
| Calibration                    | Digital calibration through software  |
| Calibration Date               | Automatically recorded within device and displayed in software  |
| Battery Type                   | Tadiran TL-2150/S 3.6V lithium battery included, user replaceable in a non-hazardous location   |
| Battery Life                   | 2 years typical at 15 minute reading rate   |
| Time Accuracy                  | 1 minute/month at 25 °C   |
| Data Format                    | Date and time stamped °C, °F, K, °R; %RH, mg/mL, Dew Point  |
| Computer Interface             | IFC400 or IFC406  |
| Operating System Compatibility | Windows XP SP3 or later   |
| Software Compatibility         | Standard Software version 4.2.19.1 or later<br>Secure Software version 4.2.18.0 or later  |
| Operating Environment          | -40 °C to +80 °C (-40 °F to +176 °F)<br>0 %RH to 100 %RH (case properly sealed)<br>0.002 PSIA to 100 PSIA                               |
| Dimensions                     | Without Key Ring: 1.67 in x 0.97 in dia. (42.3 mm x 24.6 mm dia.)<br>With Key Ring: 1.98 in x 0.97 in dia. (50.2 mm x 24.6 mm dia.)     |
| Weight                         | Without Key Ring: 2.4 oz (68 g)<br>With Key Ring: 2.2 oz (63 g)   |
| Material                       | 316 Stainless Steel/Radel   |
| IP Rating                      | Not Rated   |
| Approvals                      | CE<br>FM Class 3600, latest revision<br>FM Class 3610, latest revision<br>CAN/CSA-C22.2 No. 60079-0:15<br>CAN/CSA-C22.2 No. 60079-11:14 |

**BATTERY WARNING:** FIRE, EXPLOSION, AND SEVERE BURN HAZARD. DO NOT SHORT CIRCUIT, CHARGE, FORCE OVER DISCHARGE, DISASSEMBLE, CRUSH, PENETRATE OR INCINERATE. BATTERY MAY LEAK OR EXPLODE IF HEATED ABOVE 80 °C (176 °F).

## Ordering Information

|                 |              |   |
|-----------------|--------------|---|
| RHTemp1000IS    | PN 902213-00 | Intrinsically Safe Humidity and Temperature Data Logger with stainless steel enclosure                      |
| RHTemp1000IS-KR | PN 902218-00 | Intrinsically Safe Humidity and Temperature Data Logger with stainless steel enclosure and key ring end cap |
| IFC400          | PN 900319-00 | Docking station with USB cable  |
| IFC406          | PN 900325-00 | 6 Port, Multiplexer docking station with USB cable  |
| TL-2150/S       | PN 901745-00 | Replacement battery for the RHTemp1000IS and RHTemp1000IS-KR  |